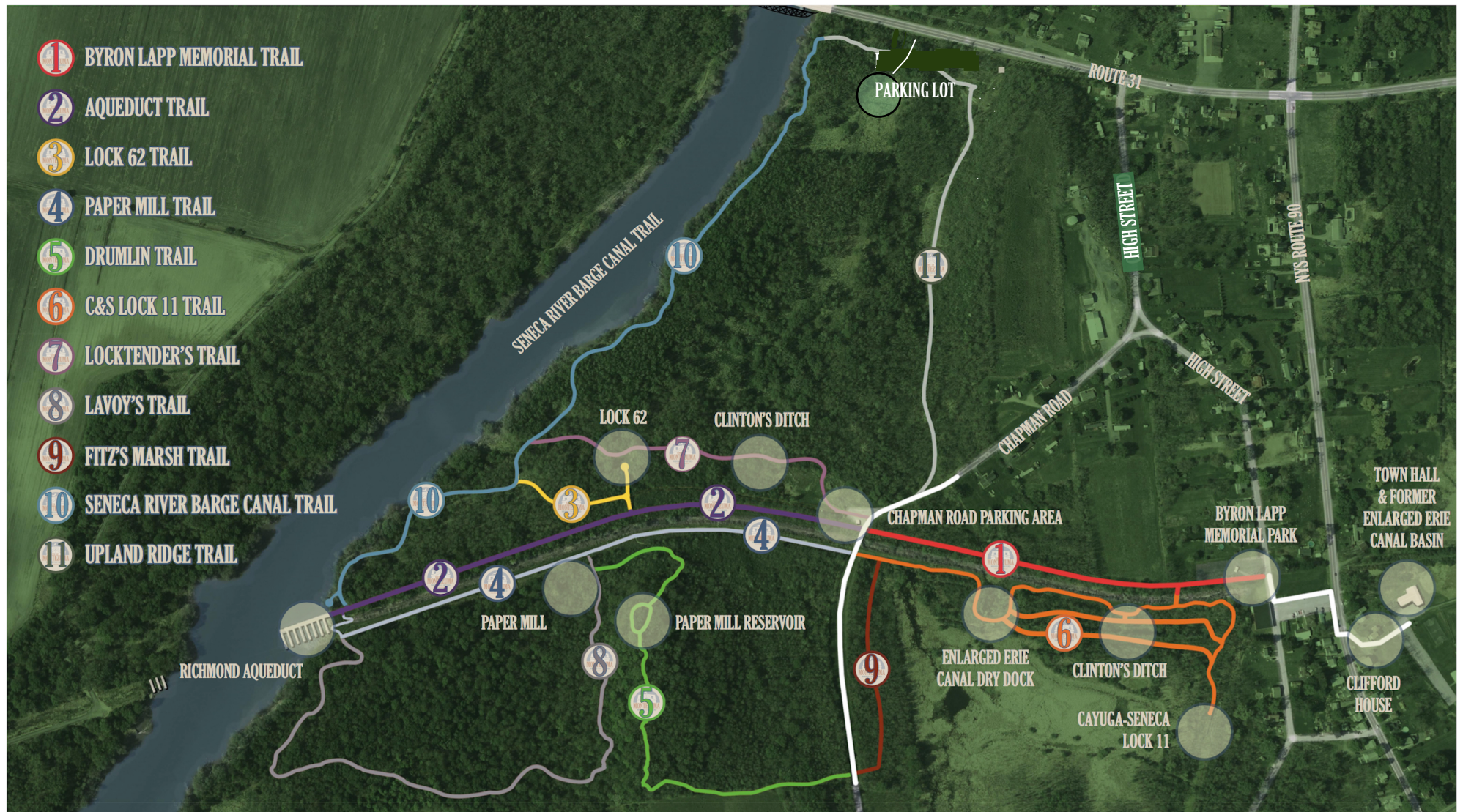




# MONTEZUMA HERITAGE PARK

## TRAIL MAP

- 1 BYRON LAPP MEMORIAL TRAIL
- 2 AQUEDUCT TRAIL
- 3 LOCK 62 TRAIL
- 4 PAPER MILL TRAIL
- 5 DRUMLIN TRAIL
- 6 C&S LOCK 11 TRAIL
- 7 LOCKTENDER'S TRAIL
- 8 LAVOY'S TRAIL
- 9 FITZ'S MARSH TRAIL
- 10 SENECA RIVER BARGE CANAL TRAIL
- 11 UPLAND RIDGE TRAIL



**#1 BYRON LAPP MEMORIAL TRAIL .4 mi/10 min:** Enter at High St. on towpath to Chapman Road; trailhead site of the original junction of the Erie and Cayuga Seneca Canals.

**#2 AQUEDUCT TRAIL .4 mi/10 min:** Enter from Chapman Road one way on the Enlarged Erie Canal towpath to the remains of the Richmond Aqueduct .

**#3 LOCK 62 TRAIL .5 mi/15 min:** Enter from Trail #2; trail leads to remains of the lock of Clinton Ditch's era connecting to Trail #10 on Seneca River.

**#4 PAPER MILL TRAIL .4 mi/10 min:** Enter south of Chapman Rd. parking lot; site of the remains of the Montezuma Fibre Company that converted harvested flag (cattails) into cardboard paper pulp.

**#5 DRUMLIN TRAIL .9 mi/25 min:** Trail off southwest side of Chapman Rd. parking lot; it gradually inclines to a drumlin hill looping around a reservoir that supplied water to the paper mill.

**#6 C & S LOCK 11 TRAIL .6 mi/20 min:** Enter on southeast side of Chapman Rd; along this trail is the site of a former drydock, marsh area, and birding lookout deck. The trail ends at the site of former Cayuga-Seneca Lock 11.

**#7 LOCKTENDER'S TRAIL .4mi/10 min:** Enter from north side of Chapman Rd parking lot along the towpath of Clinton's Ditch, Lock 62 connecting at Trail #10.

**#8 LAVOY TRAIL**  
Enter south of Chapman Rd parking lot from Trail #4 at the Paper Mill; named for Barry & Janet Lavoy, former trailblazers for the park. (under development).

**#9 FITZ'S TRAIL .4 mi/10 min:** Enter from Trail #6 east side of Chapman Rd. named for trailblazer, Tom Fitzsimmons.

**#10 SENECA RIVER TRAIL .6 mi/20 min:** Trail along the Seneca River shoreline begins at aqueduct and ends at Trail #11.

**#11 UPLAND RIDGE TRAIL .6 mi/20 min:** Enter on west side north of Chapman Rd. parking lot connecting to Trail #10.

**Website:**



<http://townofmontezuma.org/visit-the-park/>

Cheryl Longyear, Town Historian  
Email: [cml115@tds.net](mailto:cml115@tds.net)  
315-406-6575

12/2018