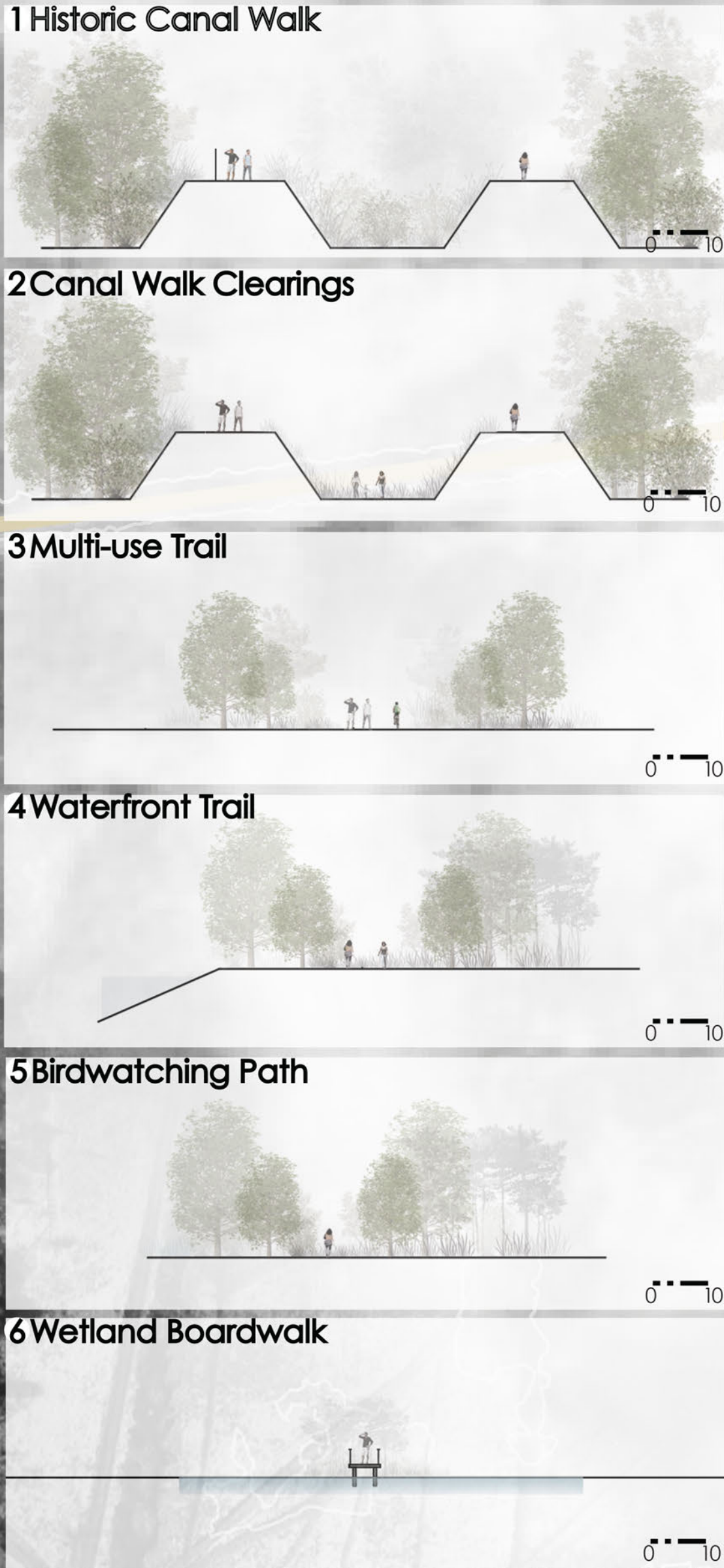


MONTEZUMA HERITAGE PARK MASTER PLAN



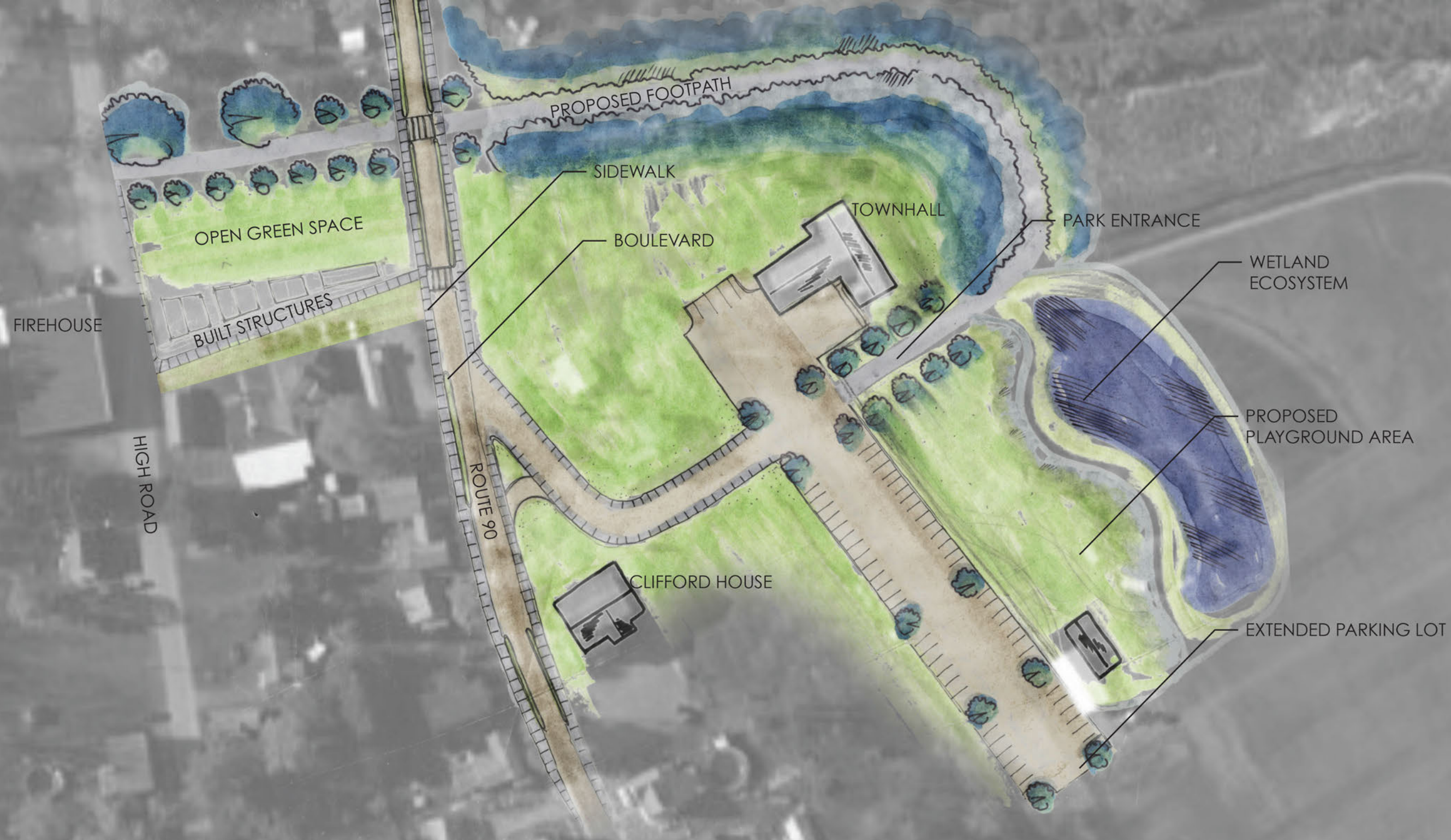
Due to the lack of industrial development since the Erie Canal, Montezuma has experienced an immense population loss and thus undergone many strains in producing a new identity for the town itself. The Town of Montezuma is using this project of redeveloping its Heritage Park as a means of re-establishing its unique status in a regional context. The Hamlet and Heritage Park are examples of how human activity has influenced the natural fabric of the land. By extending the park into the Hamlet the identity of the region can be associated with the historical significance of its existing infrastructure.





**MONTEZUMA HERITAGE PARK
HAMLET OVERLAY 1**





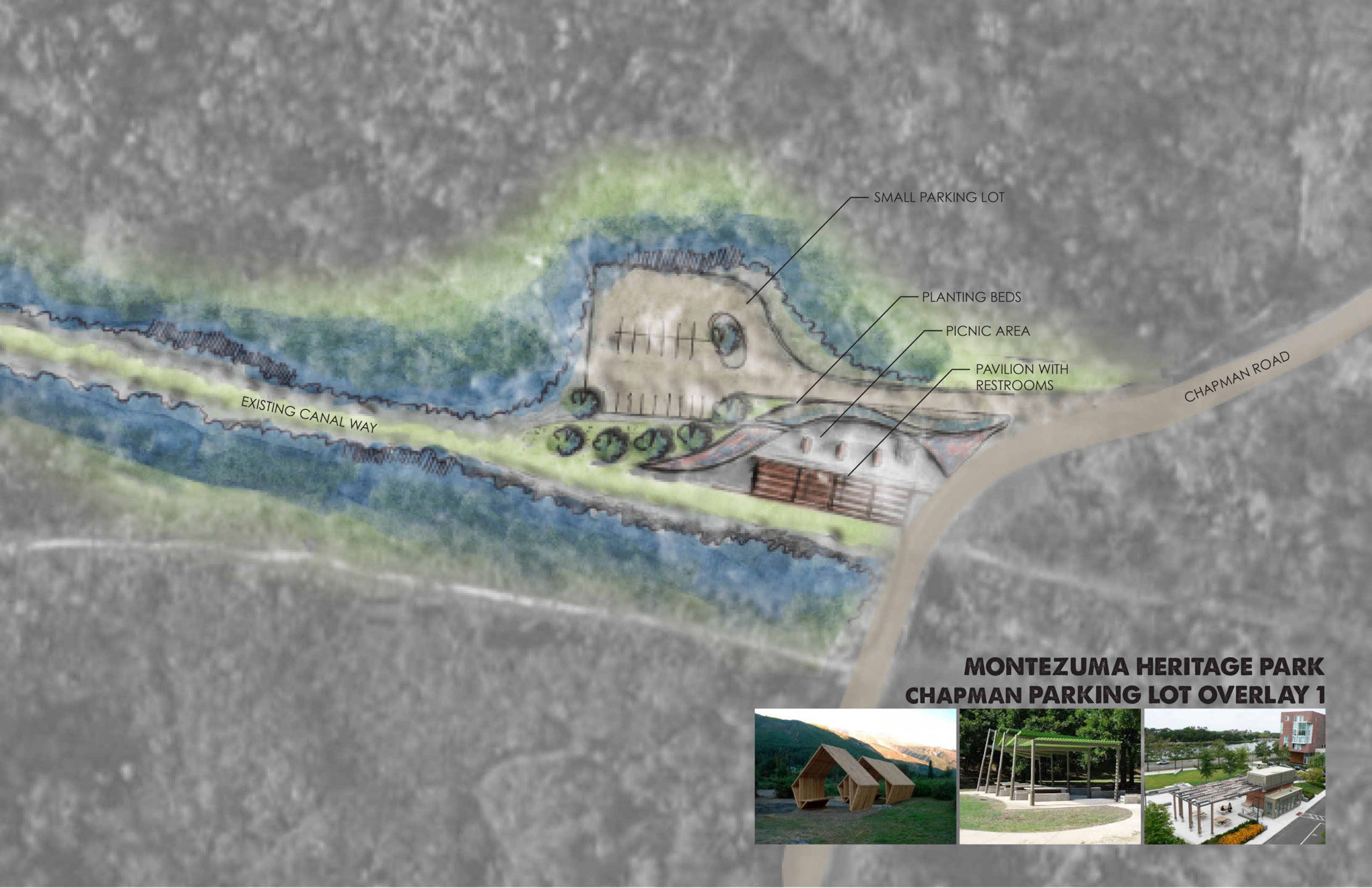
MONTENZUMA HERITAGE PARK HAMLET OVERLAY 2





MONTEZUMA HERITAGE PARK HAMLET OVERLAY 3





**MONTEZUMA HERITAGE PARK
CHAPMAN PARKING LOT OVERLAY 1**





EXISTING CANAL WAY

SMALL
PARKING AREA

BUS PARKING AND
TURN-AROUND

FORMAL TREE PLANTINGS

PAVILIONS WITH
RESTROOMS

MONTEZUMA HERITAGE PARK CHAPMAN PARKING LOT OVERLAY 2



SENECA RIVER

MAINTENANCE VEHICLE
TURN-AROUND

MAINTENANCE RAMP

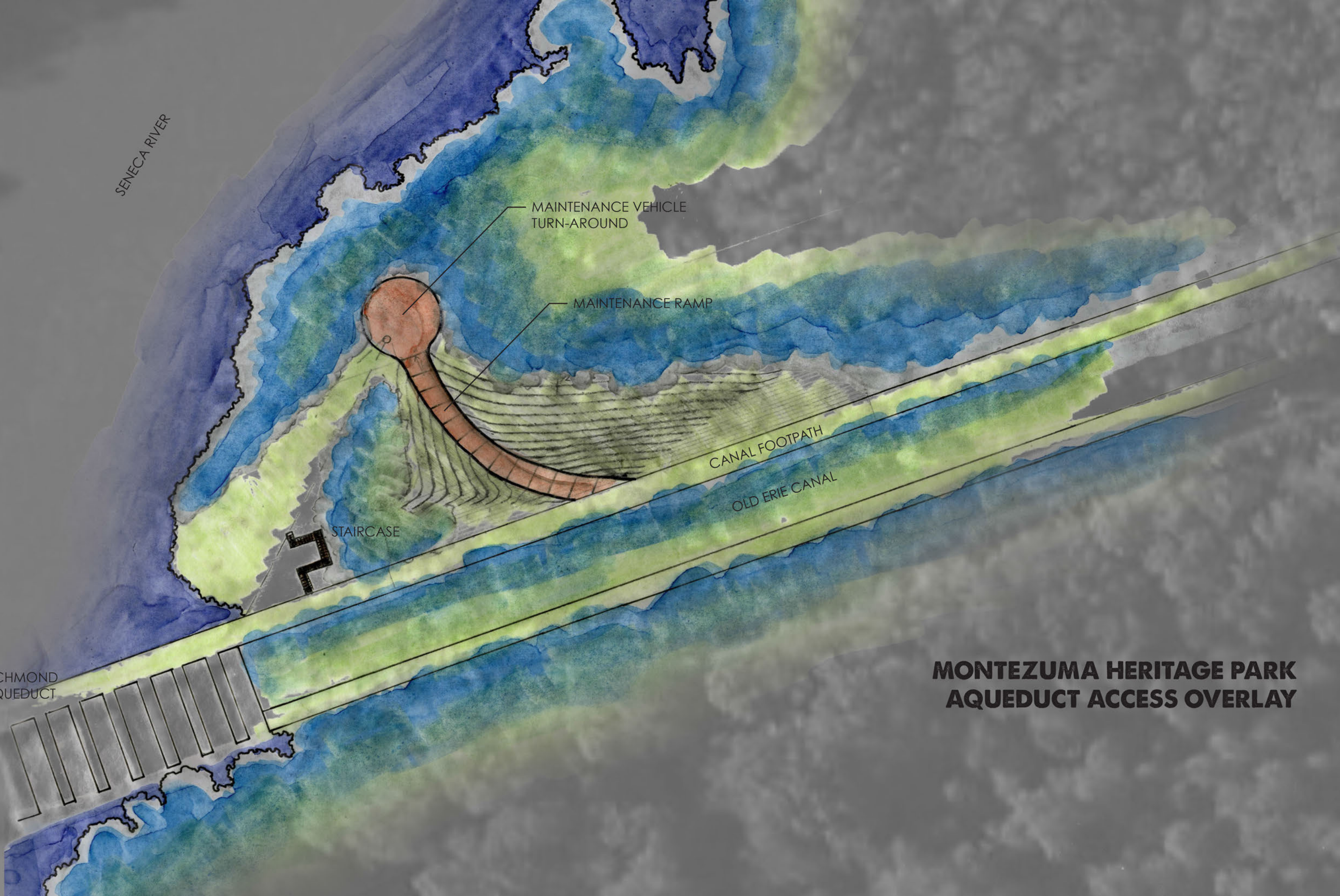
CANAL FOOTPATH

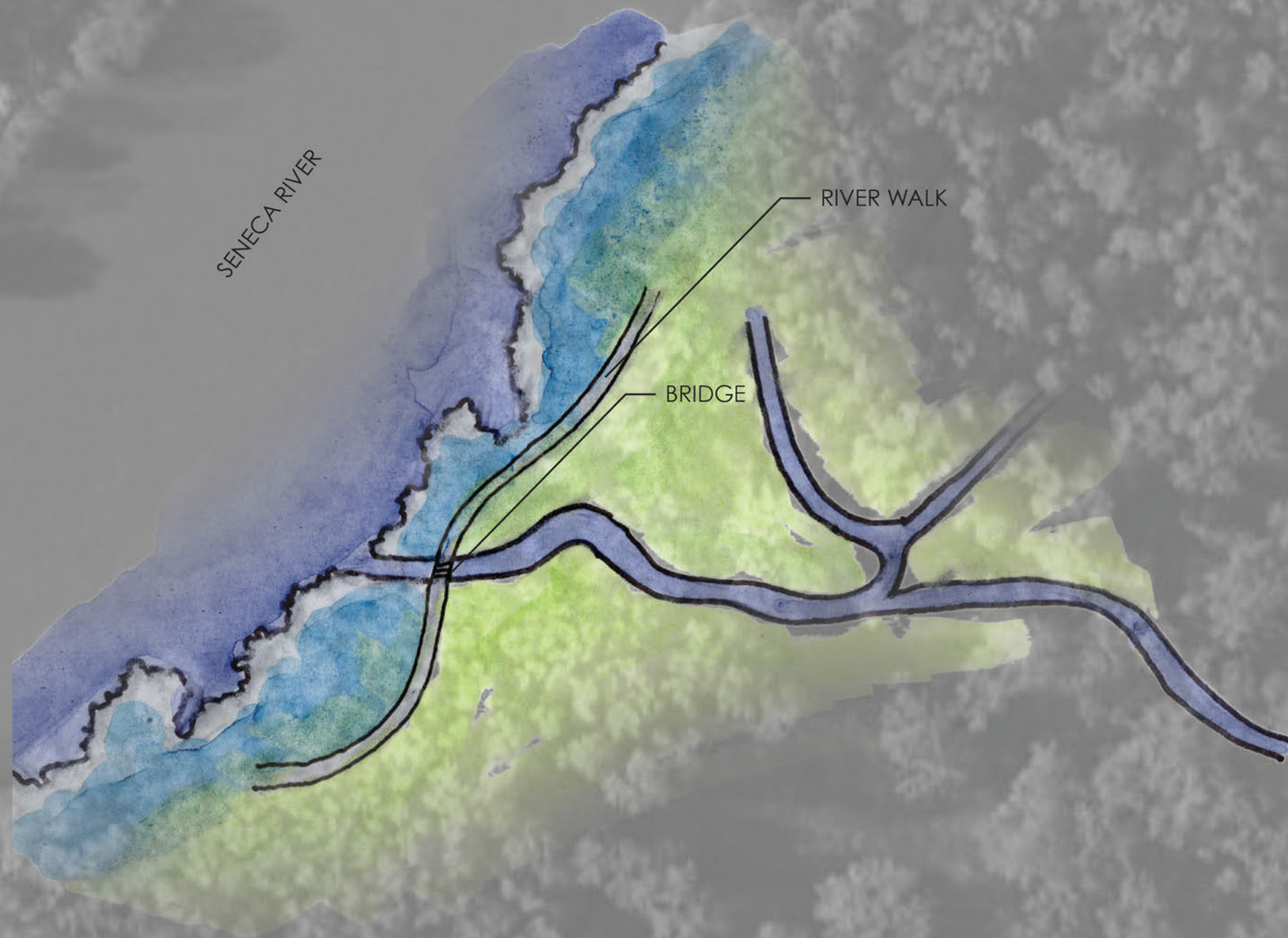
OLD ERIE CANAL

STAIRCASE

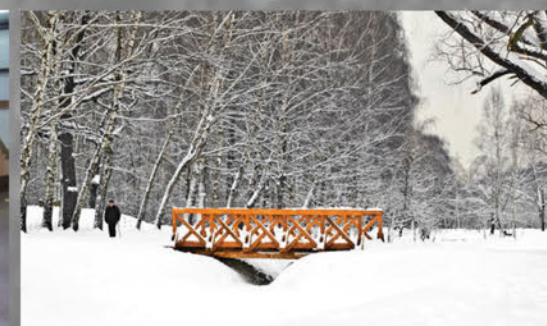
RICHMOND
AQUEDUCT

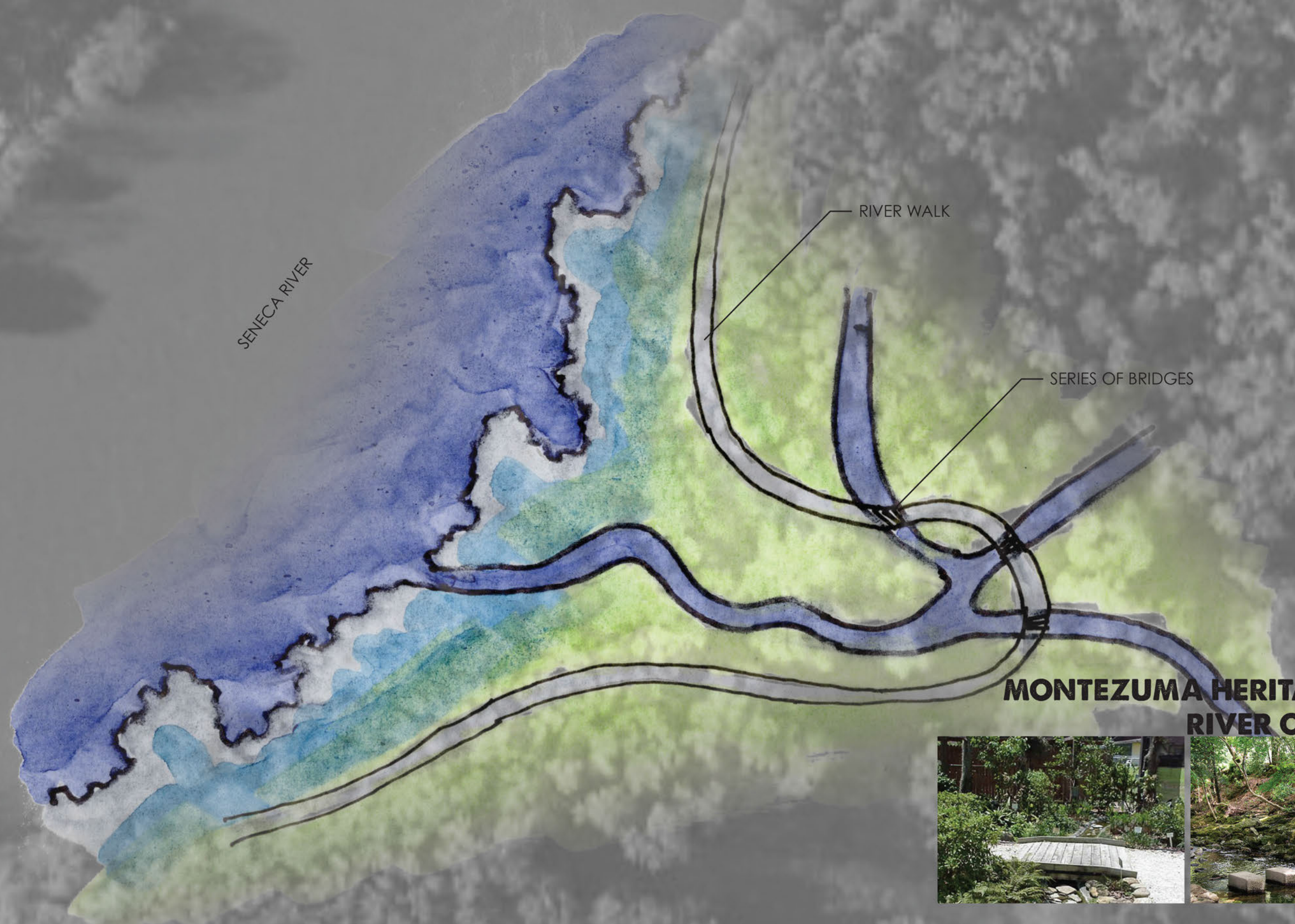
**MONTEZUMA HERITAGE PARK
AQUEDUCT ACCESS OVERLAY**





MONTEZUMA HERITAGE PARK RIVER OVERLAY 1





SENECA RIVER

RIVER WALK

SERIES OF BRIDGES

MONTEZUMA HERITAGE PARK RIVER OVERLAY 2



SENECA RIVER

MARINA

DOCK AREA

BOAT LAUNCH

PATIO

RESTAURANT

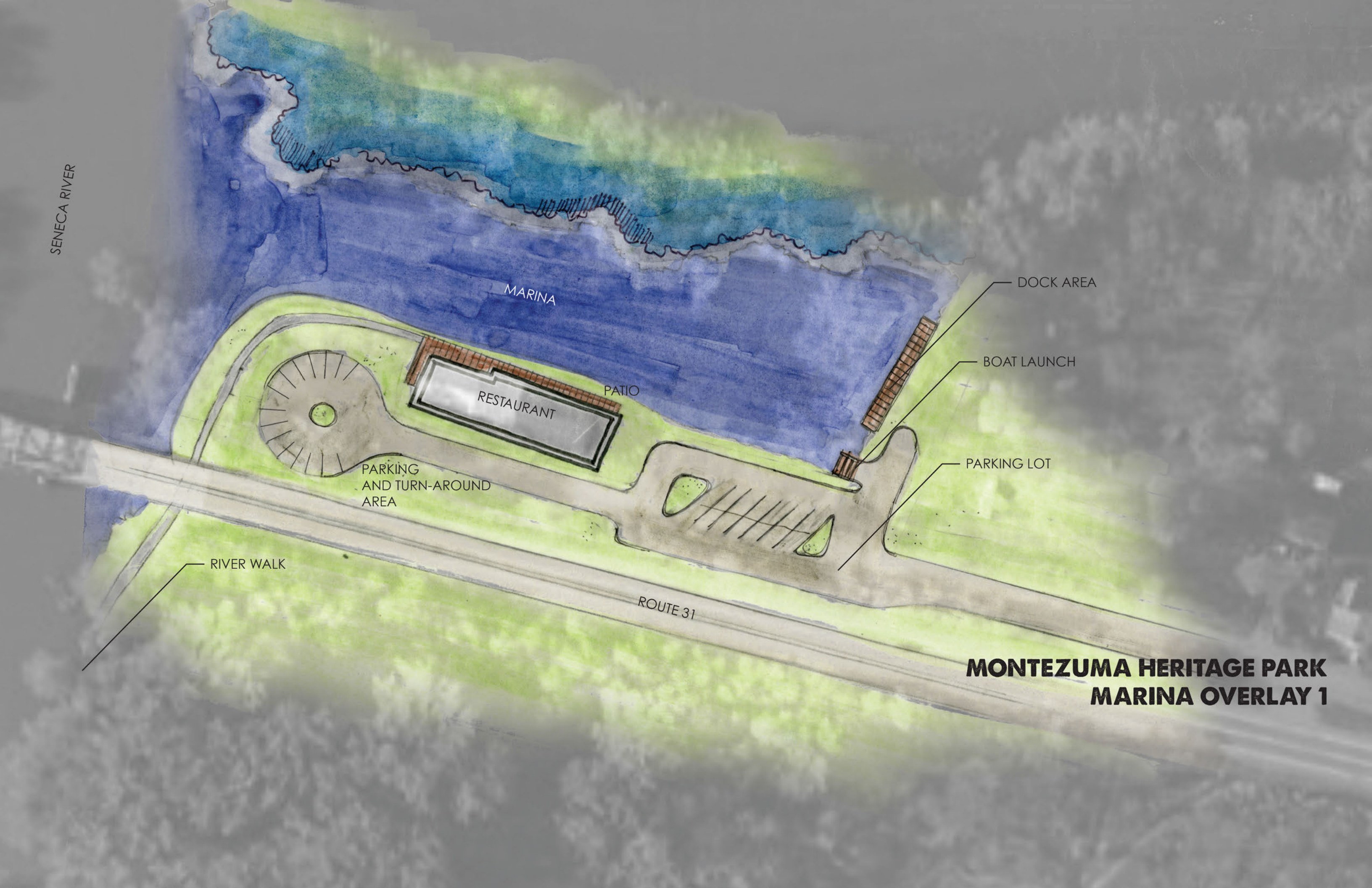
PARKING LOT

PARKING
AND TURN-AROUND
AREA

RIVER WALK

ROUTE 31

**MONTEZUMA HERITAGE PARK
MARINA OVERLAY 1**



SENECA RIVER

BOAT LAUNCH

DOCK AREA

MARINA

PATIO

PARKING
AND TURN-AROUND
AREA

PARKING LOT

RIVER WALK

ROUTE 31

**MONTEZUMA HERITAGE PARK
MARINA OVERLAY 2**

